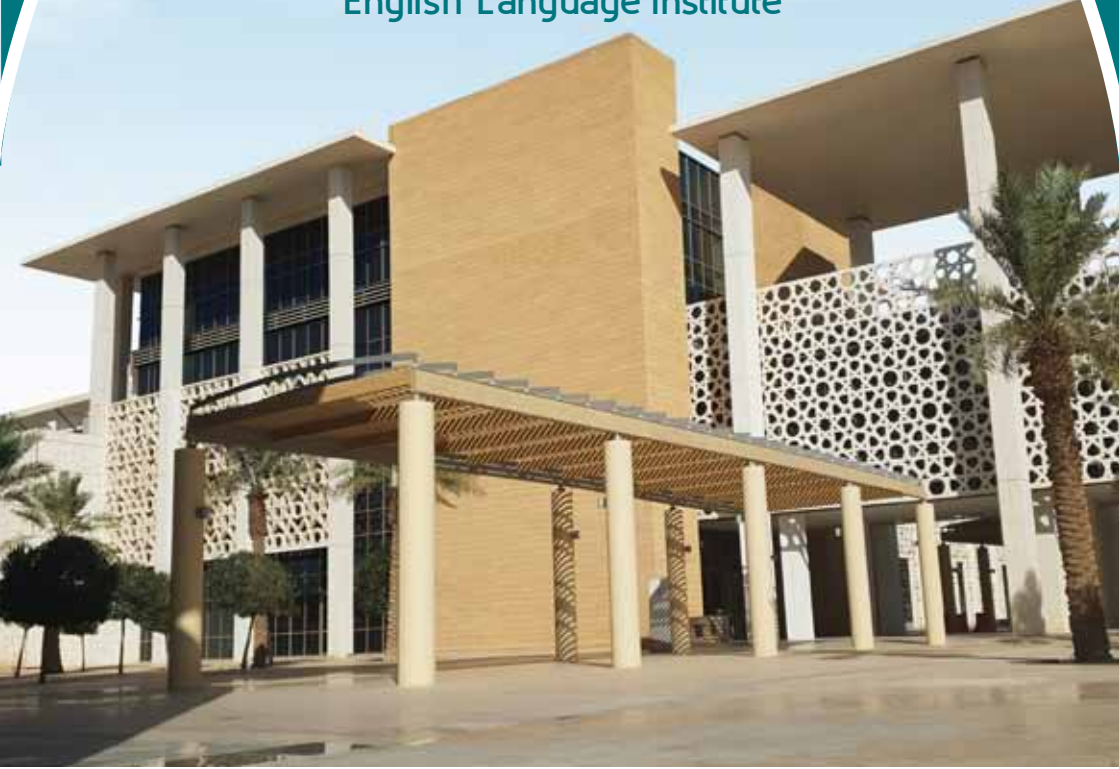




جامعة الأميرة نورة بنت عبدالرحمن
Princess Nourah bint Abdulrahman University

معهد اللغة الإنجليزية
English Language Institute





جامعة الأميرة نورة بنت عبدالرحمن
Princess Nourah bint Abdulrahman University







OUR CAMPUS

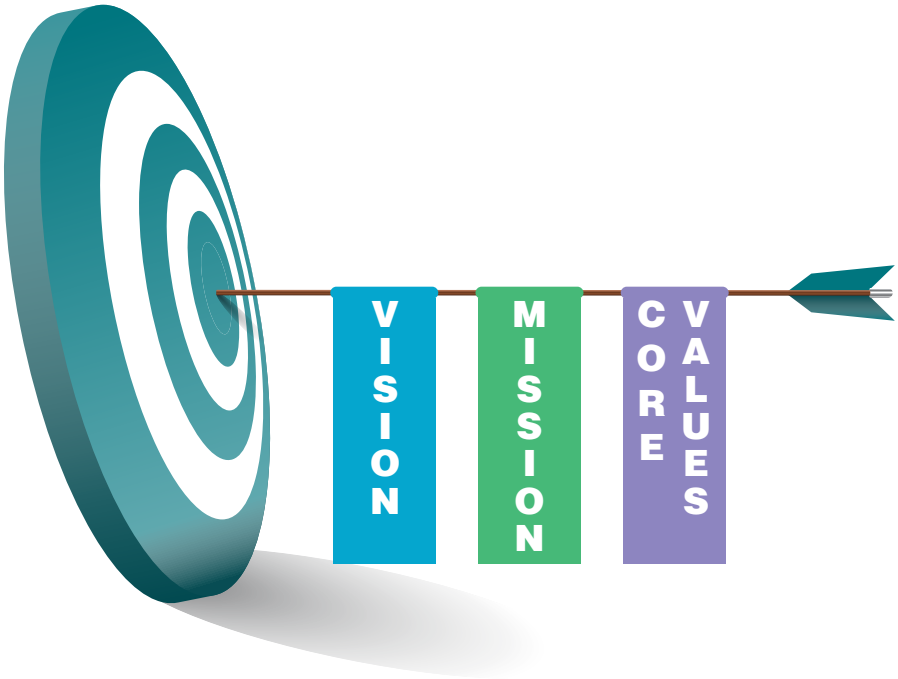
PNU's English Language Institute was established upon ministerial decree the approval no. 685 of the Education Minister in 4/3/2018, which contributes to achieving PNU's strategic objectives through enhancing the educational outcomes, and improving the process of teaching English Language in order to compete with the outstanding international universities. The English Language Institute was established as a result of the 2030 Vision, which aims at providing students with the required knowledge and skills for future jobs, and improving the students' linguistic skills in English Language as it is an integral part of the 21st Century's skills.



Our instructors come from diverse educational backgrounds and bring a range of qualifications, skills and experience into our dynamic classrooms. Our instructors have real-world industry experience.



In the classroom, students will gain theoretical knowledge combined with practical skill training, from instructors who are experts in their fields. They are deeply passionate about their subjects, as well as their students' success.



The Vision and Mission statements of the English Language Institute reflect its resolve to assiduously pursue and achieve its goals which are aligned with societal expectations of nurturing young talent and engendering high caliber professionals and scholars. The ELI remains committed to being at the forefront of providing the best education to its students and acting as a catalyst in shaping a bright and sustainable future of the nation. Specifically stated, the Vision of the ELI is as follows

Vision & Mission



Excellence in English language education that empowers women in the workforce and inspires and strengthens our nation.

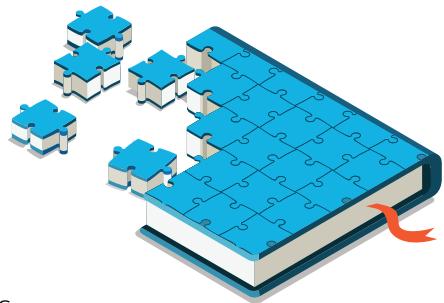
The ELI visualizes its learners as capable and enabled individuals, endowed with skills to offer sustainable solutions to a broad range of issues. Known for the highest academic standards, the ELI offers a congenial academic environment to the brightest students and an outstanding faculty. The ELI's inspiring present holds the promise of an exceptional future for its stakeholders.



Specifically stated, the Mission of the ELI is as follows:

- Delivering excellent English language education to our stakeholders.
- Serving faculties in meeting the language needs of their programs.
- Providing outstanding professional development opportunities to language educators.
- Adhering to international best practice standards in all our services.

MISSION



Core Values

The ELI is guided by Core values in delivering its Mission and pursuing its Vision.



ELI Courses and Affiliations



The English language Institute has been dedicated to providing English courses of the highest quality. We proudly receive around 5000 students yearly.

By employing highly qualified and dedicated instructors and by utilizing a dynamic and comprehensive curriculum, ELI provides the perfect environment for rapid language improvement.



ELI Courses and Affiliations



AFFILIATIONS

The ELI is affiliated with top-ranked and globally recognized industry associations, as well as provincial and/or federal accrediting bodies. Together these organizations ensure that our courses meet established and recognized industry training standards, and that our institution offers a high quality of education and student support.



IELTS™

ELI Courses

Course	Level	Description	Duration
General English 101	Beginner/ Elementary A1	Intended to provide students with a foundation from which they can advance from A1 Breakthrough to end of A2 Waystage on the Common European Framework of Reference for Languages (CEFR).	Fifteen weeks 180 hours
General English 102	Intermediate A2	Intended to provide students with a foundation from which they can advance from A2 Waystage to B1 Threshold on the Common European Framework of Reference for Languages (CEFR).	Fifteen Weeks 180 hours
English for Academic Studies 101-1	Beginner A1 Academic English (CEFR)	Intended to provide students with a foundation from which they can advance from A1 to A2 Academic English on the Common European Framework of Reference for Languages (CEFR).	Fifteen Weeks 225 hours
English for Academic Studies 102-2	Intermediate A2 Academic English (CEFR)	Intended to provide students with a foundation from which they can advance B1 Academic English on the Common European Framework of Reference for Languages (CEFR).	Fifteen weeks 225 hours
Academic Writing for Engineers 104	Advance B1 Academic English (CEFR)	Intended to focus on equipping students with the required skills for academic writing which includes charts, graphs, diagrams and note taking. Furthermore, it will develop students' skills in writing technical reports and academic research needed for their current studies.	39 hours

ELI English Proficiency Program



The ELI-EP program offers English language courses to teaching faculty and administrative staff at Princess Nourah bint Abdulrahman University

Course	Level	Description	Duration
English for General Academic Purposes	A1 to B2	It aims to develop English proficiency in the four macro skills: Listening and Speaking, Reading and Writing within a general academic framework.	12 hours of face-to-face instruction per week that is delivered over a three day period in addition to an online component for homework and independent study
Academic Research Excellence (ARE)	B1 and above	The course aims to develop the learners' language skills for academic research within English speaking contexts.	6 hours of face-to-face instruction and 2 hours of online work per week.
Language of Communication (LoC) I	B1 and above	The course aims to develop the learners' ability to communicate effectively in written English within administrative –professional contexts.	6 hours of face-to-face instruction and 2 hours of online work per week.
ELI – Language of Communication (LoC) II:	B1 and above	The course aims to develop the learners' communication skills in the English language for successful and effective interaction as representatives of the university with visitors and staff members from different cultures, as well as when traveling abroad.	6 hours of face-to-face instruction and 2 hours of online work per week.
English for Specific Academic Purposes: 1. English for advanced Nursing. 2. English for Data Analytics.	B1 and above	Have been designed to meet the specific English language needs of students studying for various master's degrees at Princess Noura University.	Fifteen weeks

ELI Summer Courses

Summer courses are offered to the public and PNU's students and to teaching faculty and administrative staff.

Course	Level	Description	Duration
Academic English	A1 to B2	It aims to develop needed academic skills for any major, along with tools for effective communication for future studies.	Five weeks 100 hours
General English	A1	It aims to provide basics of conversational English and the necessary communication skills in everyday life situations.	Five weeks 100 hours
English for Teens	A1	The course aims to provide a fun and interesting way to learn English with a focus on improving creative writing skills.	Five weeks 100 hours
IELTS preparation Course-Intensive Academic	Bands 4-5 5-6.5 6.5-7.5	The course aims to prepare candidates to take the IELTS exam and achieve their goals and desired IELTS bands	Four weeks
IELTS preparation Course-Standard Academic	Bands 4-5 5-6.5 6.5-7.5	The course aims to prepare candidates to take the IELTS exam and achieve their goals and desired IELTS bands	Six weeks
IELTS preparation Course- General	Bands 4-5 5-6.5 6.5-7.5	The course aims to prepare candidates to take the IELTS exam and achieve their goals and desired IELTS bands	Four weeks



In a continued effort to promote the highest levels of education, The ELI in association with international institutions presents a variety of workshops and courses.

The ELI is proud to hold an annual symposium that features internationally-renowned plenary speakers, an array of concurrent sessions on the latest developments and best practices, and many opportunities to network with peers. It has a dynamic agenda of plenary, paper, and workshop sessions. Over the past few years, the symposiums have been able to benefit from the presence of Cambridge University Press ELT- established top-notch speakers and authors.



Professional Development



- ✓ Cambridge Teacher Education
- ✓ Train the Trainer Phase 1
- ✓ Train the Trainer Phase 2



- ✓ Academic Management in Language Education
- ✓ Testing, Evaluation and Assessment
- ✓ Language Assessment Item Writing Course
- ✓ Advanced Diploma in English Language Teaching (ADELT 1 and ADELT 2)
- ✓ Classroom Observation
- ✓ Curriculum Development and syllabus design

Developmental Courses and Workshops at The ELI

In-house Training

- ✓ Teaching Reading
- ✓ Teaching Listening
- ✓ Teaching Writing
- ✓ Digital Tools for Creating Resources
- ✓ Exploring the Challenges of teaching Large Classrooms
- ✓ Peer Observation
- ✓ Metacognitive Awareness:
Helping Students Understand the way they learn

Facilities

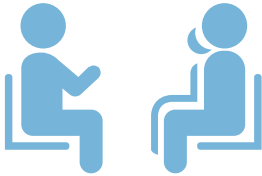


The Eli building is a modern facility where our students attend classes and access a variety of services, support and resources, as shown below.



Facilities





Student Support Unit

- Class Coordinator for each class.
- Informing , updating and keeping students abreast of all students' rights and responsibilities.



Special Needs Services

- Suitable access into student amenities and recreational areas.
- Facilitation of lessons and exams.
- One-to-one mentoring and tuition.



Remedial Classes

- Level based remedial classes :
- Reading
- Writing
- Listening
- Speaking



Digital services

- Internet Access facility.
- Online learning resources through Blackboard.
- Digital library.
- Conduct of computer based online placement test.

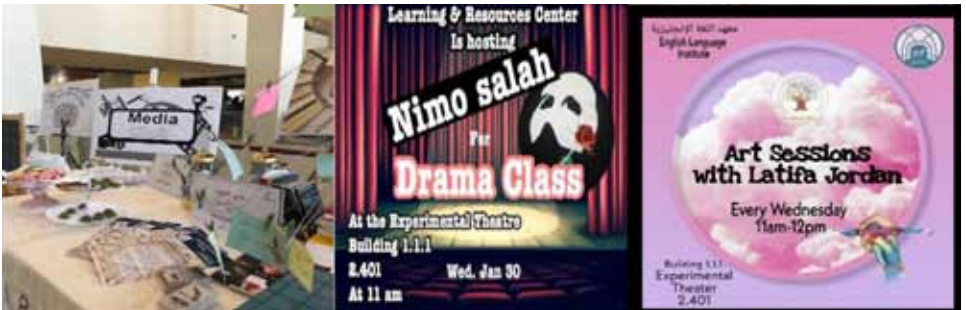
Students Activities

Outside of your English classes, there's another side of our program-the activities!

ELI activities are coordinated by our caring Learning Resource Center team. They organize events and guide activities bringing fun and energy to everything they do to keep our students smiling.



Students Activities



Events At The ELI

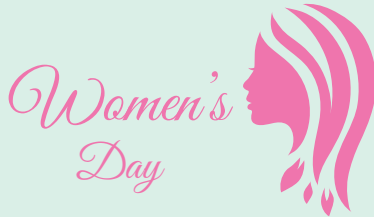
The ELI is committed to serving society and the nation through outreach and community engagement activities as an attempt to contribute to national development.



WRITING COMPETITION



Events At The ELI



Events At The ELI

NATIONAL
DAY



TEACHER'S
DAY



Events At The ELI

International Food and Cultural Day



ELI IN NUMBERS



184

FACULTY MEMBERS

15 Different Nationalities

5

THAT TEACH

Core Courses

5,000

**NUMBERS OF
STUDENTS AROUND**

Undergraduates



جامعة الأميرة نورة بنت عبد الرحمن
Princess Nourah bint Abdulrahman University

معهد اللغة الإنجليزية
English Language Institute

Connect with us



<https://www.pnu.edu.sa/en/faculties/eli>



@ELIPNU