

# Princess Nourah Bint Abdulrahman University

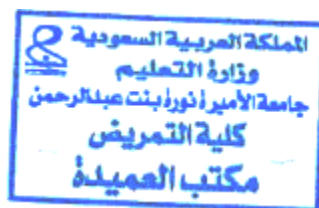
## College of Nursing

### Handbook



جامعة الأميرة نورة بنت عبد الرحمن  
Princess Nourah bint Abdulrahman University

2017-2018/1438-1439





## **PREFACE**

This Handbook is a compilation of the College, faculty, and student handbooks together. It is designed to orient the faculty and students about the College of Nursing. It contains information on the administrative, academic, social services, and other resources and opportunities available in the college and university that will help you as you embark your journey either as faculty or students.

The handbook clarifies the values and standards held by the college and each faculty and student is expected to honour and uphold these in their conduct as members of the college and the university.

The College Handbook focuses on general information and services available for both students and faculty. It describes the organizational structure and functions, the general services, and the academic program of the college.

The Student Handbook focuses on student affairs from academics to social. It provides them information about their academic program, requirements (curricular, co-curricular, and extra-curricular), and resources available for their learning in and outside the classroom, residential amenities, and opportunities for their holistic growth and development as students.

The CON Handbook overall is a reference for each faculty and student that aims to make their journey at the College of Nursing transformative, comfortable, fulfilling, and worthwhile.

## **DISCLAIMER**

The College of Nursing Administration reserves the right to make changes without prior notice in all policies, assignments, schedules, courses, grading, curricula, and all other matters contained in this Handbook.

## Table of Contents

Dean's Message.....	8
About Princess Nourah Bint Abdulrahman University.....	9
Description And History Of The College Of Nursing.....	11
Philosophy.....	12
Vision .....	13
Mission .....	13
Values .....	13
Strategic Goals .....	13
Orgnization Chart .....	14
College Units And Functions: .....	15
Dean’s Office:.....	15
Vice Deanship Of Academic Affairs .....	16
Vice Deanship Of Students’ Affairs.....	18
Vice Deanship Of Postgraduate Studies And Scientific Research .....	20
Vice Deanship Of Quality And Development .....	21
Director Of Administrative And Financial Affairs.....	22

Academic Nursing Degree.....	23
<u>Academic Programs Links</u> .....	23
The BSN Program Study Plan .....	24
Facilities .....	28
1. Library.....	28
Central Library.....	28
College Of Nursing Library.....	28
2. Information Technology Computer Laboratories.....	31
3. Classrooms.....	31
4. Clinical Laboratories.....	32
Center For Clinical Simulation.....	32
College Of Nursing Laboratories:.....	33
5. Prayers Room.....	34
6. Learning Management System (Lms) Blackboard.....	35
7. Center, Conference Halls And Meeting Rooms.....	35
8. Faculty Suit.....	36
9. Hospital And Health Clinics.....	36

10. Transportation.....37

11. Recreation Centers.....38

12. Disability Support For Staff, Students, And Visitors.....38

Nursing College Picture



## **DEAN'S MESSAGE**

The Kingdom of Saudi Arabia has been witnessing extensive development recently; a development that has been characterized by its qualitative and quantitative expansion in the health services sector .

This expansion necessitates the qualification of human cadres that conform in quality to the generous funds that have been specifically allocated for this purpose .

To achieve this objective, the PNU College of Nursing was established, to supply the nation along with the other academic institutions with graduates who are able to compete in the field of health care services .

This goal is easy to achieve, as the PNU College of Nursing is distinguished by its faculty members and state-of-the-art equipment.

Dean Nursing college,

Dr Samira Alsenany



## **ABOUT PRINCESS NOURAH BINT ABDULRAHMAN UNIVERSITY**

The education of women in the Kingdom of Saudi Arabia has received a great deal of attention and this has allowed Saudi women to make definite strides towards achieving their ambitions and unveiling their uniqueness in different fields

The Saudi woman has emerged, not only at the local level, but at the international level as well. We see examples of Saudi women in the fields of culture and specialized research, examples who are respected and acknowledged in international arenas and in the various fields of science, proving their success and their worthiness that rivals that of their peers in other advanced countries.

PNU is one of the outcomes of the attention given to the higher education of women. This attention started early, when the General Presidency for the Education of Girls established the first college for women in 1390 AH, corresponding to 1970 CE. The inauguration of more colleges followed, reaching 102, ranging from university colleges to intermediary colleges and community colleges. These were distributed over 72 Saudi cities and included 600,000 students.

In 1427 AH, a royal order was issued for the establishment of the first university for women in Riyadh, under the supervision of the Ministry of Higher Education. This included the six colleges located in Riyadh, in addition to a number of new colleges established for the purpose of women's education and development in the Kingdom.

The university was inaugurated in 1428 AH with the appointment of its first rector, H.H. Dr. Al-Jawhara bint Fahd Al-Saud. On Wednesday, 29/10/1429 AH, the university was honored with the Custodian of the Two Holy Mosques King Abdullah Bin Abdul-Aziz placing the cornerstone for the university campus. His Majesty at that time saw it best to change the name to Princess Nourah Bint Abdulrahman University (PNU); Princess Nourah being the sister of the founder of the Kingdom of Saudi Arabia, the late King Abdul Aziz Bin Abdulrahman.

Princess Nourah Bint Abdulrahman University, is the largest women's university globally, and one of the ten largest universities in the world. PNU is a public university with over 42,000 students enrolled in 15 colleges.

1. College of Medicine
2. College of Dentistry
3. College of Nursing

4. College of Pharmacy
5. College of Health and Rehabilitation Sciences
6. College of Business and Administration
7. College of Computer and Information Science
8. College of Science 9. College of Art and Design
10. College of Art
11. College of Education
12. College of Home Economics
13. College of Social Work
14. College of Languages and Translation 1
15. Community College

The University Campus is 8 million square meters in size and was constructed in a record time of two years. The environmental friendly green campus has 600 smart buildings with the capacity for 60 thousand students. In addition, the campus includes a central library, a simulation center and research center, and a King Abdullah Abdul-Aziz University Hospital (KAAUH).

## **DESCRIPTION AND HISTORY OF THE COLLEGE OF NURSING**

The College of Nursing was established by virtue of the approval of the Custodian of the Two Holy Mosques King Abdullah Bin Abdul-Aziz; President of the Higher Education Council, via decree number 8628/mb, dated 27/9/1428 AH, based on decision number 13/47/1428 issued by the Higher Education Council.

The CON was inaugurated in the academic year 1429/1430 AH (2008/2009) with the enrollment of 39 students. The number of students registering in the college continued to grow through the years. The administration and faculty are a mix of local, international, and highly qualified professionals brought together to deliver the high quality standard of nursing education the college aims to provide.

## **Philosophy**

The College of Nursing is dedicated to educating Saudi women in an environment that enhances their capabilities to become globally competent health care providers and leaders whose values and standards are deeply rooted in the teachings of Islam and congruent to the Saudi culture.

The CON seek to provide nursing education that is focused on the students, incorporating scientific, ethical, aesthetic, and reflective principles to develop life-long values of self- inquiry, critical thinking, sound judgment, and caring morals.

The CON value and embrace diversity in the academic environment and among our clientele in the health care milieu, promote respect to life, religion, culture and individualities, support innovation in teaching and learning undertakings, strive for high quality and excellence in the education of our students and in the provision of health care. It also, uphold highest ethico-moral standards in nursing practice.

The CON strive to provide resources and opportunities for nursing students to engage in research and scholarship, develop social awareness and responsiveness, committed to health care service to society, show leadership capabilities, and seek excellence in their practice.

The CON continuously develop its faculty and curriculum to stay relevant and updated with this practice setting local and international. It perseveres to keep excellence and high standard in the nursing education and aims to contribute in the knowledge generation to the nursing profession. The CON collaborates with the community and other stakeholders in both scientific endeavors and community service to engage students and faculty as rich sources of expertise, talents, skills, and values.

CON endeavors to be recognized as global center of excellence for nursing education; an exemplar in the field of nursing research, clinical practice, social services, and teaching-learning innovations.

## **Vision**

The vision of the Princess Nourah Bint Abdulrahman University, College of Nursing is to be recognized as a center of excellence in nursing education, research and community services.

## **Mission**

The Mission of the Princess Nourah Bint Abdulrahman University, College of Nursing is to Promote the health and well-being of individuals and community local, national and global through provision of excellent nursing education and graduation of competent nurses with research and leadership skills.

## **Values**

- Integrity.
- Excellence.
- Quality.
- Respect.
- Innovation.
- Diversity.

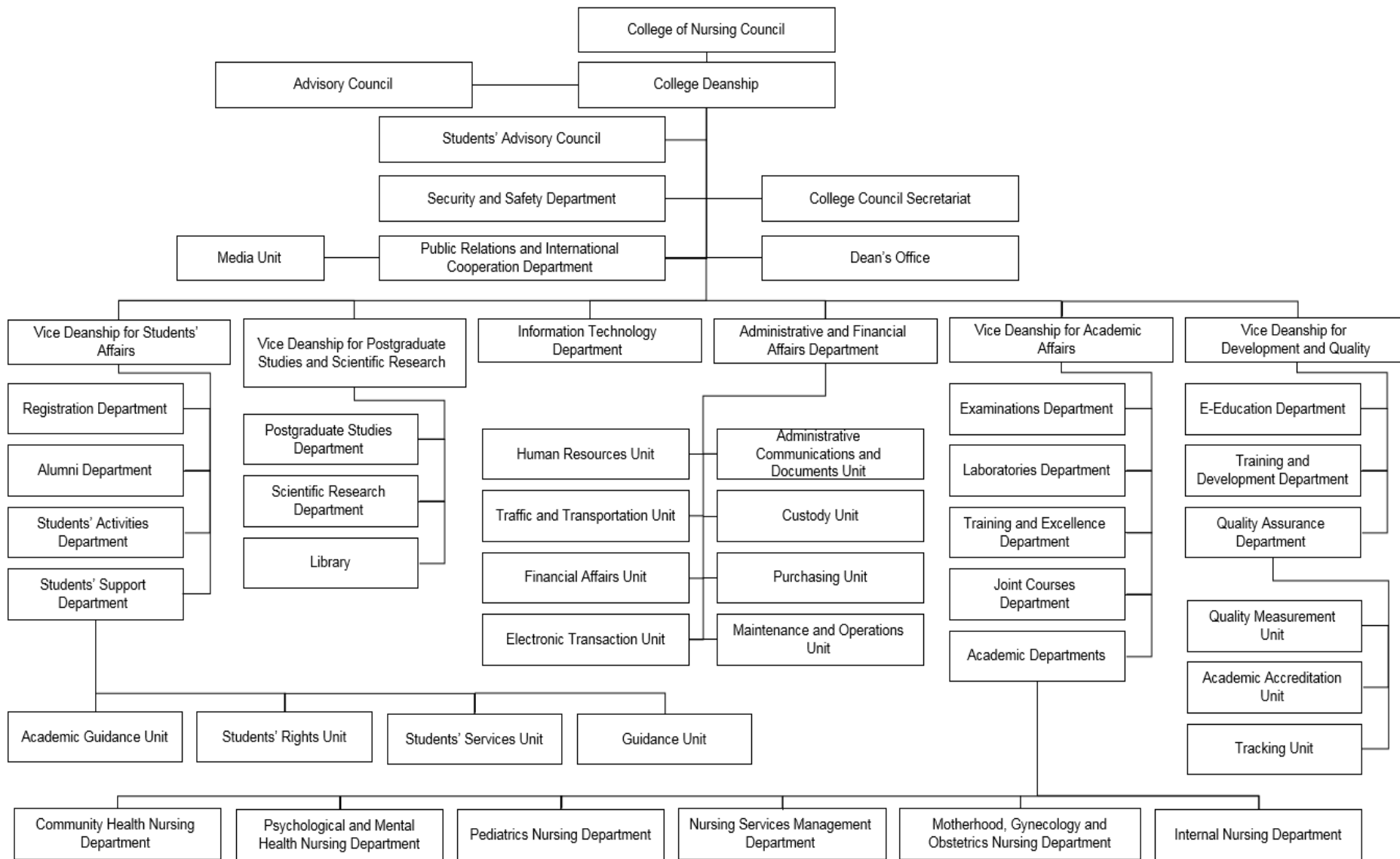
## **Strategic Goals:**

**Goal 1:** Foster and facilitate the development of competent nursing graduates who are prepared for professional nursing practice in generalist and advanced nursing roles for community services.

**Goal 2:** Cultivate strategic partnerships and inter-professional collaboration with stakeholders to provide quality education, practice, and health services.

**Goal 3:** Achieve regional recognition for collaborative nursing research and scholarship that improves health outcomes and transforms nursing education.

# ORGANIZATION CHART



**COLLEGE UNITS AND FUNCTIONS:**

**Dean’s office:**

Governs and ensures the educational vision, mission, and goals of the college are achieved. The office provides the resources and opportunities for the staff, faculty, and students with the highest standard of administrative and academic services to be accessible, and adequate.

The Dean office is assisted by the different Vice Deanship and personnel offices to implement the strategic and operational plans of the college. The Dean spearheads the overall governance of the college.

<b>Dean office</b>	<b>Extension</b>	<b>Email</b>
The Dean	40444	
Secretary of Dean	40438	<a href="mailto:Cn@pnu.edu.sa">Cn@pnu.edu.sa</a>
	40435	
Public Relations and Media Office	40649	<a href="mailto:Cn-prm@pnu.edu.sa">Cn-prm@pnu.edu.sa</a>
	40567	

## Vice Deanship of Academic Affairs

### Objective

Assisting the Dean of CON on leading the academic process in the college based on PNU rules and regulations.

### Affiliated Departments:

- Examination Department
- Laboratories Department
- Academic Departments
- Common Courses Department
- Training and Internship Department

Contact Information Vice Deanship of Academic Affairs

Vice Deanship Departments	Extension	Email
Vice Dean of Academic Affairs	40442	
Secretary of Vice Deanship of Academic Department	40754	<a href="mailto:Cn-aa@pnu.edu.sa">Cn-aa@pnu.edu.sa</a>
	40491	
Examination Department	40499	<a href="mailto:Cn-eu@pnu.edu.sa">Cn-eu@pnu.edu.sa</a>
Laboratories Department	40418	<a href="mailto:Cn-lu@pnu.edu.sa">Cn-lu@pnu.edu.sa</a>
Training and Internship Department	40419	<a href="mailto:Cn-tiu@pnu.edu.sa">Cn-tiu@pnu.edu.sa</a>



## ACADEMIC PROGRAM

The College of Nursing graduates academically and professionally qualified nurses who are able to keep abreast with advancements in clinical sciences, apply integrated nursing care based on Islamic values, and fulfill the health needs of individuals, families, and communities. The College also graduates cadres who are capable of conducting competitive scientific research. The duration of study at the College of Nursing is 4 years, in addition to a fifth year of mandatory clinical internship program.

The College of Nursing has the following departments:

- Medical surgical Nursing Department
- Women's Health Nursing Department
- Pediatric Nursing Department
- Mental health and psychiatric Nursing Department
- Community Health Nursing Department
- Nursing Leadership and Management Department

Vice Deanship Departments	Extension	Email
Head of Community health Nursing Department	40744	<a href="mailto:Cn-ch@pnu.edu.sa">Cn-ch@pnu.edu.sa</a>
Secretary of Community health Nursing Department	40651	
Head of Medical Surgical Nursing Department	40677	<a href="mailto:Cn-ms@pnu.edu.sa">Cn-ms@pnu.edu.sa</a>
Secretary of Medical Surgical Nursing Department	40410	

## **Vice Deanship of Students' Affairs**

### **Objectives**

- Assisting the Dean of the College of Nursing in supervising the execution of students' registration procedures and providing the best academic services.
- Aiding students in achieving their academic objectives, guiding them on how to develop their academic plans, encouraging them to embrace responsibility, and supplying them with accurate information on university programs and bylaws.

### **Affiliated Departments**

- Registration Department
- Equivalence and Transfers Department
- Academic Schedules Department
- Alumni Department
- Students' activities Department
- Students' Support Department

### **Affiliated Units:**

- Students' Rights Unit
- Academic Guidance Unit
- Counseling and Guidance Unit
- Students' Services Unit

## Contact Information for Vice Deanship of Students' Affairs

<b>Vice Deanship Departments</b>	<b>Extension</b>	<b>Email</b>
Vice Dean of Students' Affairs	40404	<a href="mailto:Cn-sao@pnu.edu.sa">Cn-sao@pnu.edu.sa</a>
Secularity of Vice Deanship of Students' Affairs	40414	
Registration Department	40415	<a href="mailto:Cn-ru@pnu.edu.sa">Cn-ru@pnu.edu.sa</a>
Alumni Department	40430	<a href="mailto:Cn-gu@pnu.edu.sa">Cn-gu@pnu.edu.sa</a>
Students' Activities Department	40425	<a href="mailto:Cn-officeactivity@pnu.edu.sa">Cn-officeactivity@pnu.edu.sa</a>
Students' Support Department	40432	<a href="mailto:Cn-ssg@pnu.edu.sa">Cn-ssg@pnu.edu.sa</a>
Equivalence and Transfers Department	40613	<a href="mailto:Cn-sao@pnu.edu.sa">Cn-sao@pnu.edu.sa</a>
Counseling and Guidance Unit	40430	<a href="mailto:Cn-ssg@pnu.edu.sa">Cn-ssg@pnu.edu.sa</a>

## Vice Deanship of Postgraduate Studies and Scientific Research

### Objective

Assisting the Dean of the College of Nursing in supervising postgraduate programs and scientific research projects, according to the PNU approved rules and regulations..

### Affiliated Departments

- Postgraduate Studies Department
- Scientific Research Department
- Library

Contact Information for Vice Deanship of Postgraduate Studies & Scientific Research

Vice Deanship Departments	Extension	Email
Vice Dean of Postgraduate Studies & Scientific Research	40420	<a href="mailto:Cn-rgs@pnu.edu.sa">Cn-rgs@pnu.edu.sa</a>
Head of Postgraduate Studies Department	40485	
Secretary of Postgraduate Studies Department	40487	<a href="mailto:Cn-rgs@pnu.edu.sa">Cn-rgs@pnu.edu.sa</a>
Head of Scientific Research Department	40824	
Secretary of Scientific Research Department	40492	
Library	40458 40457 40441	<a href="mailto:Cn-l@pnu.edu.sa">Cn-l@pnu.edu.sa</a>

## Vice Deanship of Quality and Development

### Objective

Enhancing all academic and practical aspects of the college; as to programs, courses, methods and techniques. It promotes college' staff skills to achieve quality in performance and ensures academic accreditation standards for the college and its programs.

### Affiliated Departments

- Training and Development Department
- Quality Assurance Department
- E-learning Department

Contact Information for Vice Deanship of Postgraduate Studies & Scientific Research

Vice Deanship/Department/Unit	Extension	Email
Vice Dean of Quality and Development	40494	<a href="mailto:Cn-dq@pnu.edu.sa">Cn-dq@pnu.edu.sa</a>
Quality Assurance Department	40642	<a href="mailto:cn-qad@pnu.edu.sa">cn-qad@pnu.edu.sa</a>
Training and Development Department	40428	<a href="mailto:cn-tdd@pnu.edu.sa">cn-tdd@pnu.edu.sa</a>
Electronic Education Department	40652	<a href="mailto:cn-eld@pnu.edu.sa">cn-eld@pnu.edu.sa</a>

## Director of Administrative and Financial Affairs

### Objectives

Providing both, administrative and financial services to the academic and administrative departments of CON.

Contact information of the Vice Deanship of Administrative and Financial Affairs

Vice Deanship/Department/Unit	Extension	Email
Financial and Administrative Affairs Director	40666	<a href="mailto:Cn-afau@pnu.edu.sa">Cn-afau@pnu.edu.sa</a>
Communications Department	40427	<a href="mailto:Cn-cmo@pnu.edu.sa">Cn-cmo@pnu.edu.sa</a>
Financial Affairs Department	40493	<a href="mailto:Cn-fau@pnu.edu.sa">Cn-fau@pnu.edu.sa</a>
Human Resources Department	40422	<a href="mailto:Cn-aeo@pnu.edu.sa">Cn-aeo@pnu.edu.sa</a>
Traffic and Transportation department	40459	<a href="mailto:Cn-tu@pnu.edu.sa">Cn-tu@pnu.edu.sa</a>
Supplies Department	40437 40816	<a href="mailto:Cn-io@pnu.edu.sa">Cn-io@pnu.edu.sa</a>
Electronic Trading Department	40502	<a href="mailto:Cn-et@pnu.edu.sa">Cn-et@pnu.edu.sa</a>

## ACADEMIC NURSING DEGREE

Princess Nourah Bint Abdulrahman University grants the College of Nursing graduates a Bachelor of Science in Nursing (BSN) degree.

### Academic Programs links

Link and appendix

#### 1. Core and Elective Requirements

<https://www.pnu.edu.sa/en/Faculties/Nursing/Documents/Core%20and%20Elective%20Requirements.pdf>

#### • Academic Levels

<https://www.pnu.edu.sa/en/Faculties/Nursing/Documents/Academic%20Levels.pdf>

#### • Course Descriptions

<https://www.pnu.edu.sa/en/Faculties/Nursing/Documents/Course%20Description.pdf>

## The BSN Program Study Plan

### Foundation Year for Health Colleges

#### First year, Level 1

#	Course title	Code & number	Contact hours			Number of Unit	Pre-Req
			T	L	C		
1	Islamic Culture (1)	ISLS 101M	2			2	
2	English for Health Programs (1)	HFSE 104	15			6	
3	Physics for Health programs	HFSP 101-1	2	2		3	
4	Biology for Health programs	HFSB 101-1	2	2		3	
5	Math for Health programs	HFSM 101-1	1	2		3	
6	Medical Terminology	ENGL 207M	2			2	
Total			18 Unis				

#### First year , Level 2

#	Course title	Code & number	Contact hours			Number of Unit	Pre-Req
			T	L	C		
1	Islamic Culture (2)	ISLS 202M	2			2	ISLS 101M
2	Arabic Composition	ARAB 101M	2			2	
3	English for Health Programs (2)	HFSE 206	15			6	
4	Introduction to health Professions	HFSI 101	1			1	
5	Human Biology for Health Programs	HFSB 102-1	2	2		3	
6	Chemistry for Health programs	HFSC 101-1	2	2		3	
7	Introduction to Biostatistics	HFSS 101-1	1	2		2	
Total			19 Unis				



### Second year, level 3

#	Course title	Code & number	Contact hours			Number of Unit	Pre-Req	
			T	L	C			
1	Language Skills	ARAB 202M	2			2	ISLS 101M	
2	Introduction to Psychology	PSY 102M	2			2		
3	Introduction to Professional Nursing	NUR 101M	2			2		
4	Therapeutic Communication	NUR 121M	2			2		
5	Human Growth and Development	PSY 142M	3			3		
6	Anatomy and Physiology (1)	MBS 201M	2	2		3	HFSB101-1	
7	Biochemistry	CHEM 151M	2	2		3	HFSC 101-1	
Total			17 Unis					

### Second year, level 4

#	Course title	Code & number	Contact hours			Number of Unit	Pre-Req	
			T	L	C			
1	Assessment and Diagnosis in Nursing	NUR 211M	3	4	6	7	NUR 101M	
2	Anatomy and Physiology (2)	MBS 202M	2	2		3	MBS 201M	
3	Clinical Pharmacology	PHS 231M	3			3		
4	Microbiology and Disease	MBS 261M	3	2		4	HFSB101-1	
5	College requirement (1)	-	3			3		
Total			20 Unis					

### Third year, level 5

#	Course title	Code & number	Contact hours			Number of Unit	Pre-Req	
			T	L	C			
1	Islamic Culture (3)	ISLS 303M	2			2	ISLS 101M	
2	Genetics/Genomics	MBS 171M	3			3	HFSB101-1	
3	Nursing Care of the Adult (1)	NUR 331M	3		9	6	NUR 211M, NUR 121M,	
4	Pathophysiology of Disease	MBS 251M	3			3	MBS 202M	
5	College Minor Requirement (2)		3			3		
6	Statistics in Health Research	MPH 311M	3			3	HFSS 101-1	
Total			20 Unis					

### Third year, level 6

#	Course title	Code & number	Contact hours			Number of Unit	Pre-Req	
			T	L	C			
1	Epidemiology and Global Perspective in Health Care	MPH 301M	3			3		
2	Introduction to Sociology	SWK 101M	3			3		
3	Nursing Care of the Adult (2)	NUR 332M	3		9	6	NUR 331M	
4	Electronic Information Management	IS 433M	2			2		
5	Elective Course (1)		3			3		
Total			17 Unis					

### Fourth year, level 7

#	Course title	Code & number	Contact hours			Number of Unit	Pre-Req
			T	L	C		
1	Maternity and woman health Nursing	NUR 431M	3		6	5	NUR 332M
2	Pediatric Nursing	NUR 432M	3		6	5	NUR 332M
3	Nursing Care of the Elderly	NUR 433M	3		6	5	NUR 332M
4	Spirit of Inquiry: Nursing Research and Evidence-Based Practice	MPH 313M	3			3	MPH 311M
Total		18 Unis					

### Fourth year, level 8

#	Course title	Code & number	Contact hours			Number of Unit	Pre-Req
			T	L	C		
1	Islamic Culture (4)	ISLS 404M	2			2	ISLS 101M
2	Critical Care Nursing	NUR 434M	3	2	6	6	NUR 431, NUR 432, NUR 433
3	Nursing Management	NUR 451M	2			2	All the major requirements until level 7
4	Emotional and Mental Health of Clients	MBC 461M	3		6	5	PSY 102M
	Capstone Project (EBP)	NUR 441M	2			2	All the major requirements until level 7
Total		17 Unis					

### Fifth year- Clinical Internship Program

#	Course title	Code & number	Contact hours			Number of Unit	Pre-Req
			T	L	C		
1	Clinical Internship Program	-	-	-	-	-	Passing all the requirements
Total		12 months					

## FACILITIES

### 1. Library

#### Central Library

The central library is considered to be one of the main landmarks in Princess Nourah Bint Abdulrahman University. It was designed perfectly to clearly express the beauty of the Arabian Heritage. It occupies an area of (38523 square meters). Also, it contains a digital system for keeping and storing books. It has a capacity of five million books. This digital system is designed to bring the requested book to the client in less than 9 minutes. It also has the capability of bringing down almost 1500 book an hour.

#### College of Nursing Library

The library is considered as a fundamental element in the educational process. It is in light of this importance that the library was established in 1430 AH, to support the educational process.

The CON library is located on the ground floor of the College of Nursing building (240), main entrance (0.207). The library encompasses a hall for foreign scientific journals, a reading hall, and a video-conferencing hall. It is distinguished by its collections of recently published books specializing in the field of nursing.

**E-Services** - Faculty and students can also access online the following:

- [Saudi Digital Library](https://sdl.edu.sa/) - <https://sdl.edu.sa/>
- [E-Library](http://www.ac-knowledge.net/) - <http://www.ac-knowledge.net/>



Central Library



## **2. Information Technology Computer Laboratories**

The College of nursing information technology computer laboratories are located on the first floor room number (1.208) for students and staff use. An IT office is available for technological assistance for both staff and students.

## **3. Classrooms**

All classrooms are equipped with modern technologies like the E-podium and other audio-visuals to support teaching-learning activities. Classrooms with varied accommodation sizes and functions are available for academic activities.



#### 4. Clinical Laboratories

##### Clinical Skills Development Center & Simulation :

The clinical skill and simulation center of Princess Nourah Bint Abdulrahman University in Riyadh, envisioned embracing the educational and training requirements of the university colleges and the university hospital; utilizing state of the art technology and the simulation best practices to excel in clinical skills.

The center will respond to the training needs of undergraduate, postgraduate and healthcare communities. In addition, the simulation laboratories support and assist research developments and partnership opportunities.





### College of Nursing Laboratories:

The College of Nursing has modern laboratories fully equipped with high fidelity mannequins and medical supplies to provide venue for high quality skills training for the students. It also provides facilities designed for students' OSCE and other skills evaluation activities.

The laboratories include the following units:

- Fundamental of Nursing
- Medical and Surgical
- critical care
- Pediatric
- Maternity



Objective Structured Clinical Examination Laboratory

## 5. Prayers Room

The university has accessible Mosques and prayer rooms all over the vicinity. There are two prayers room in the College of Nursing which are located at the on the ground floor of the Nursing building, room number (0.002.01 B), and first floor room number (1.002.01B).



## 6. Learning Management System (LMS) Blackboard®

Blackboard is an innovative learning management system used by the College of Nursing to conduct courses as supplemental to the classroom didactics. It is an online platform utilizing the internet where students can access learning from anywhere using the blackboard's suite of tools.

## 7. Center, Conference halls and meeting rooms

Provisions for conferences and meetings for both large and small groups are available within the college building. These are equipped with state of the art technologies and are designed for comfort and work safety.

The Convention Center is a landmark venue for the greater Riyadh metropolitan area. The venue is a versatile space able to accommodate large events, conventions, plays, concerts for mixed and exclusively-women events. The stunning interiors find inspiration in geometric pattern and vernacular color palette. A grand concourse splits into three distinct lobbies connecting to the convention center, large performance hall for a total capacity of 4,000 spectators, and small performance hall.



Center, Conference halls and meeting rooms



## 8. Faculty Suite

The College provides offices with miscellaneous rooms like pantry, washrooms, and consultation areas for the faculty members located at the third floor of the college building.

## 9. Hospital and Health Clinics

Staff and student can avail free medical services at the King Abdullah bin Abdulaziz University Hospital (KAAUH) located at the A1 station within the university. It is a 300-bed teaching hospital with associated outpatient, inpatient, and emergency facilities with clinical services covering: Obstetrics/Gynecology, Internal Medicine, Surgery, Pediatrics, ENT, Ophthalmology and Urology.



## 10. Transportation

An 11.5 km driverless light metro serves the Princess Nourah Bint Abdulrahman University. It is claimed to be the world's first metro system entirely within a university campus. The service is based on four routes. Two serve the 10-station loop, clockwise and anti-clockwise, providing students with access to all the main faculty buildings at the center of the 800 ha campus. Two further routes run from the outer anti-clockwise loop onto branches serving family and single students' accommodation, each with two further stations.

Facilities and services are available to transport students from their residences to PNU;( This includes PNU students from outside Riyadh e.g. Rimah, Al-Amajiah, Al-Kharj Road, Dareiah, Special Security Forces, and Salboukh); transport PNU students for field training at hospitals, universities, and specialized centers; transport on-campus students and contracted faculty members to hospitals, medical centers, and markets near campus, in addition to 24-hour emergency services; and transport PNU students, faculty, and staff members to attend conferences, seminars, visits and participate in events and community service inside and outside the University.



## 11.Recreation Centers

A faculty recreation center designed to enrich the faculty campus experience and provide a place for relaxation is located east of the faculty housing zone. It includes amenities like spa, swimming pool, sports facility, fitness rooms, and the like.



## 12.Disability Support for staff, students, and visitors

The College of Nursing provides equal opportunities for staff and students with disabilities (mental and physical) with an environment that enables them to have access to both facilities and learning environment. It ensures that barriers (structural, cultural, organizational, and attitudinal) are addressed and controlled.

This disability policy extends to the public who are using the College premises and services.